



Automating Accounts Payable

Jim Fisher, Business Development Director
Lovell Booth, Implementation Consultant

www.WeAreV1.com



V1 is Committed to the Sage Community



Certified Solution
Sage ERP X3

- ▶ Integration with Sage 300 ERP (Accpac), Sage Line 500, Sage 1000 and Sage CRM.
- ▶ Embedded OEM Solution for Sage ERP X3.
- ▶ Supported by leading Sage partners across four continents
- ▶ V1 is used by Sage themselves
- ▶ We have over 3500 customers worldwide



Select V1 Customers

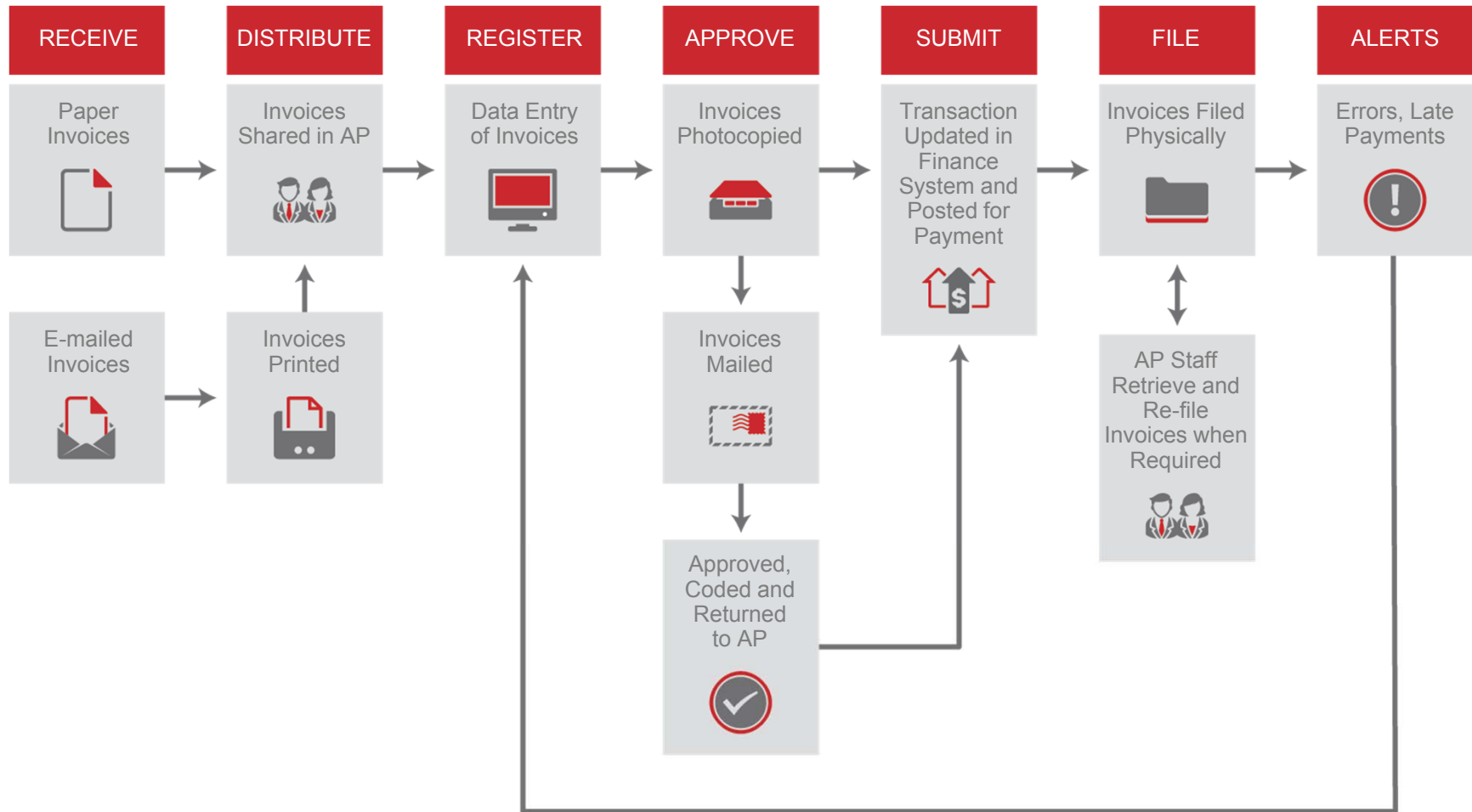


What is Electronic Document Management?



- ▶ Scanning and imaging of paper documents
- ▶ Indexing/organization of documents for efficient retrieval
- ▶ Secure storage of documents (any documents)
- ▶ Electronic document delivery (email, fax, FTP, web-posting)
- ▶ Creation of electronic documents (PDF, XML, etc.)

Typical Paper Based Process



Do You Experience These Challenges?

- ▶ Paper processes are cumbersome and time consuming
- ▶ Invoices can go missing in all phases of the AP process
- ▶ AP staff spend time chasing approvers for authorization
- ▶ Lack of visibility in AP makes responding to supplier queries difficult
- ▶ Slow authorization could mean you miss out on early payment discounts or face late payment charges
- ▶ Manual processes can be inaccurate and lead to hours of work to correct the errors further down the line
- ▶ Difficult to share hard copy documents with interested parties

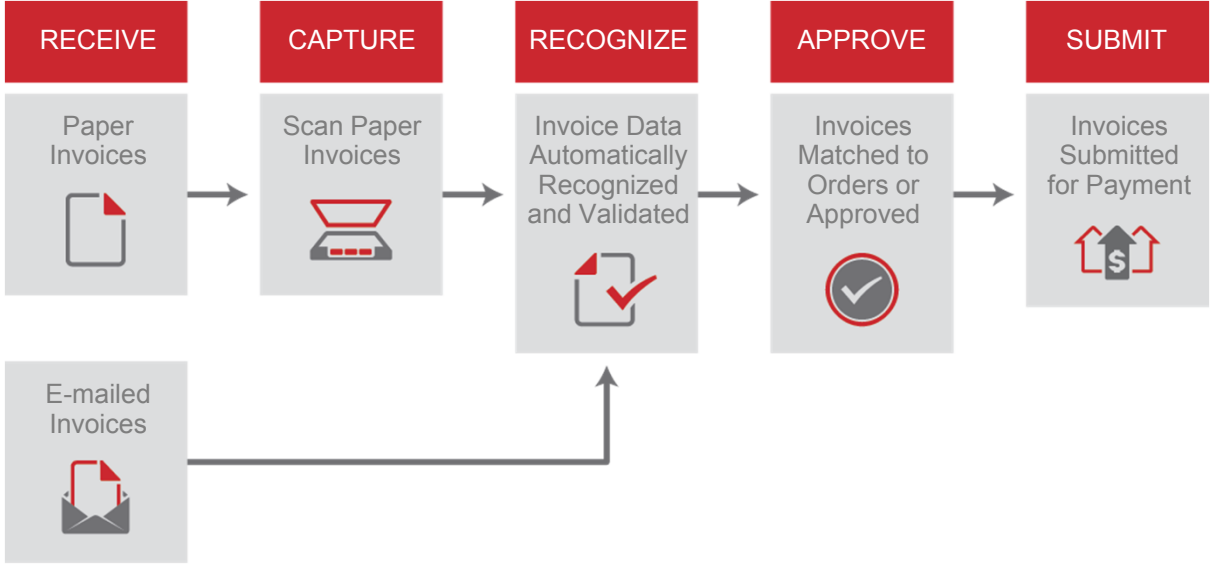


Where Can We Help?

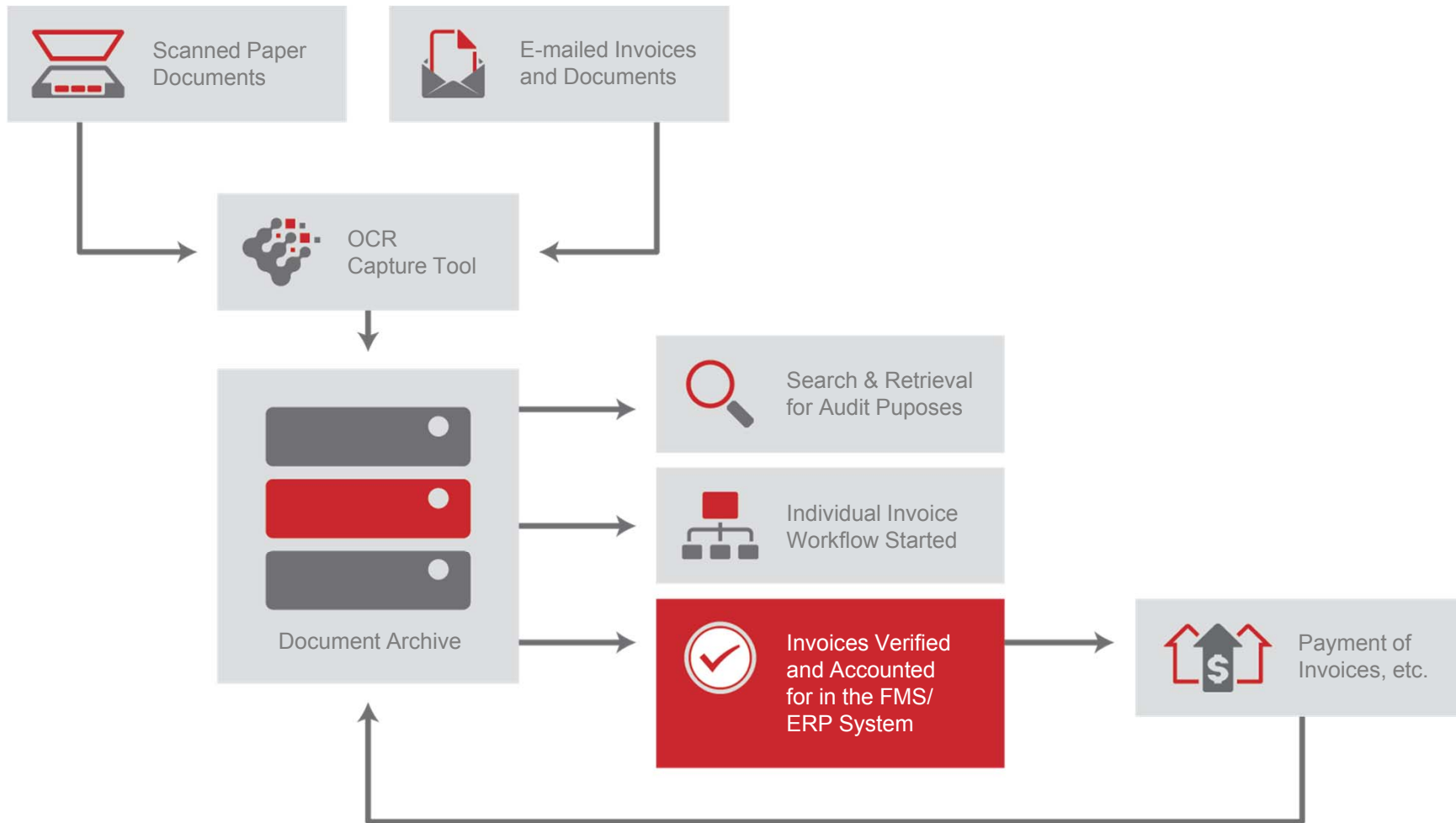
- ▶ Streamline processes
 - ▶ Save time on data entry, approval and filing
 - ▶ Record invoices immediately upon receipt
 - ▶ Quicker Approval
- ▶ Improve control and access to documents
 - ▶ Invoices can be electronically compared to values in the **Sage 300 ERP**
 - ▶ Store all invoice details from the **Sage 300 ERP**
 - ▶ See any invoice at any time
- ▶ Reducing costs
 - ▶ Save on stationery, photocopying, postage, space
 - ▶ Take advantage of early payment discounts
- ▶ Improving staff productivity
 - ▶ Less photocopying, fewer errors, and less hunting for documents



V1's Automated Process



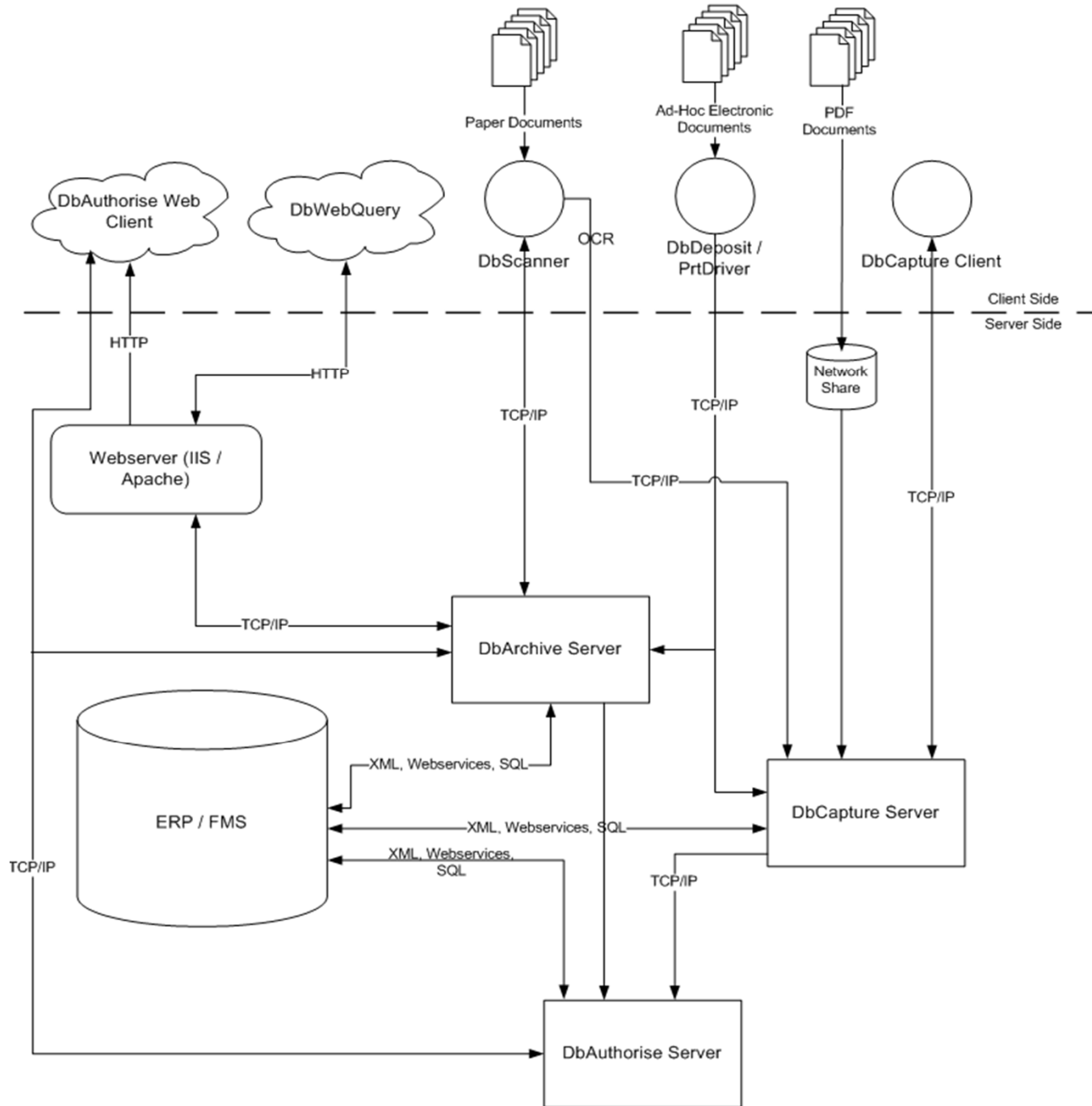
V1 Architecture



Live DEMO

By Lovell Booth





ROI

- Dramatically reduce manual data entry.
 - Our data capture solution can reduce the time taken to key invoice data **by up to 80%.**
- Reduce time and labor costs.
 - Our document archiving solution can reduce filing and retrieval time **by up to 95%.**
- Our authorization solution removes the need to send physical documents throughout your organization, allowing a saving of approximately **60% per invoice.**



Compliance With Regulatory Standards

USA	HIPPA and Sarbanes Oxley
EU	ISO 27000
Canada	C-SOX, Income Tax Act, Employment Insurance Act

Customer Story: Metro News

“We selected V1’s because it would considerably speed-up our AP processes, cut costs and free-up staff time.

V1’s proven ability to tightly integrate into Sage’s Accpac accounting system was critical as we required a fully integrated purchase invoice processing solution.”

Richard Regan, Controller, Metro News

Key results:

Annual savings estimated at

\$40,000

Reduce manual data entry by

40 Hours per week



Customer Story: Sanmina SCI

“As well as improving payment processing efficiency, V1’s systems will free up space that is currently used to store hundreds of boxes full of paper documents”

Financial Systems Manager, East Riding of Yorkshire Council

Key results:

As a result of automating its processes:

- ▶ Suppliers paid by BACS and remittances automatically emailed
 - ▶ Many more invoices received electronically
 - ▶ Planning to bring outsourced invoice processing back inhouse in 2013
-



Customer Story: Field Studies Council

“We selected V1’s system because it was well proven and offered tight integration with our Sage system.

The reduction in data entry has freed up Centre Managers for more productive work; reduced the number of chasing calls; and allowed us to meet payment targets.”

Richard Walker, Finance Director, Field Studies Council

Key results:

Savings of

£100,000

per annum

And

**environmental
benefits**



Introducing V1

- ▶ Hundreds of V1 customers of all shapes and sizes globally
- ▶ Established in 1989
- ▶ Over 3,000 clients worldwide
- ▶ 17 offices worldwide – Atlanta and Orlando
- ▶ Represented by partners in 20 countries
- ▶ End to End Solution – All components



Next Steps

- ▶ Quickly assess the benefits with our online ROI calculator:
www.WeAreV1.com/ROI
- ▶ Work with us and your Finance System support partner to capture your requirements and design your solution
- ▶ Compile a detailed business case using our resources
- ▶ Solution and business case presentation to decision-making panel
- ▶ Make the right decision for your business



V1

- ▶ Represented by an established partner network
- ▶ Our key partners include:





For more information, contact:

Jim Fisher
Business Development Director

E: jim.fisher@wearev1.com

T: 678.576.8042

www.WeAreV1.com