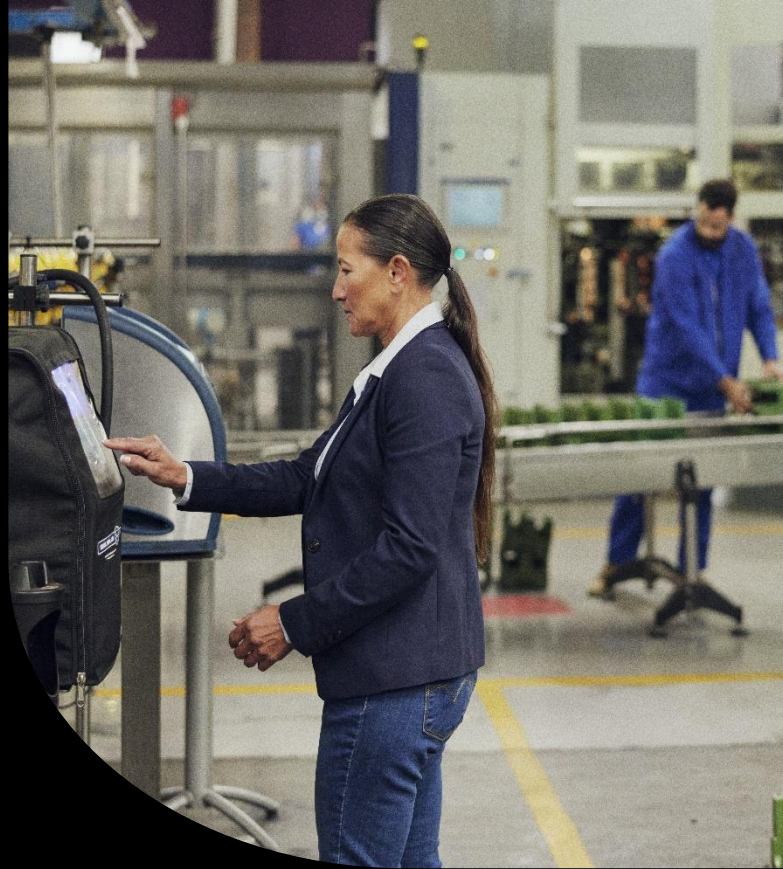


# Sage Shop Floor Control

Drive efficiencies in your shop floor operations through streamlined data collection and tracking

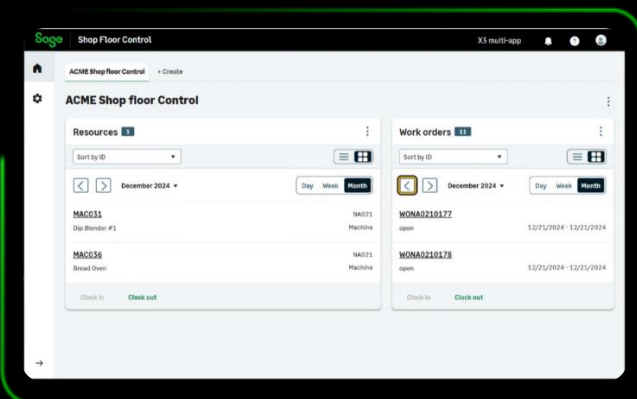


## The goal

Sage Shop Floor Control is a new cloud-based application designed for ease of use by mid-sized manufacturers who want to streamline their shop floor operations.

This ready-to-use app extends your Sage solution empowering you to collect execution data, track progress, monitor resource usage, visualize production status and manage your operators – all without the need for lengthy recurring training, due to a best-in-class user experience.

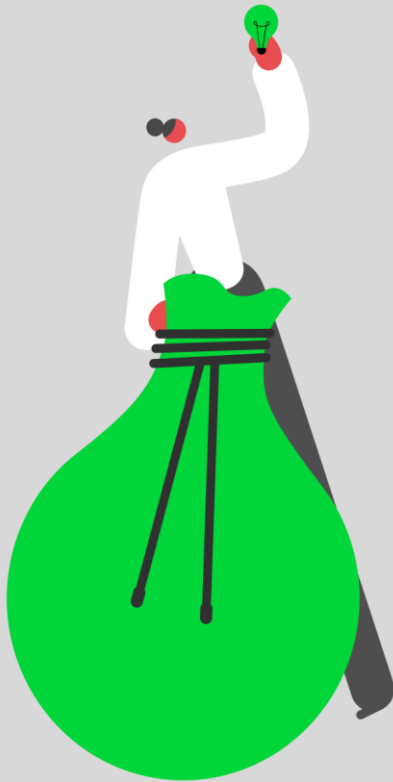
It's the key to unlocking a streamlined shop floor, boosting efficiency, and maximizing your production potential.



## With Sage Shop Floor Control, you can:

- Work on a cloud-native app, optimized for a touchscreen experience on tablet interfaces
- Create time tracking entries for Work Order operations (prepare, start, pause, finish)
- Declare production quantity
- Track machine usage and availability, with operation details
- View Work Orders to do, in progress and already completed
- Seamless real-time integration with Sage ERP and business management solutions
- Regular feature updates, deployed automatically
- View Work Order details: materials, operations and instructions (coming soon)
- Dashboard with key KPI for operators and managers (coming soon)





## Key benefits for your business

### Real-Time Monitoring and Insights

Access to live data on machine status, production progress, and performance metrics

Quick identification and resolution of issues, minimizing downtime

Real-time tracking of individual and team performance

### Reduced errors

Elimination of manual data entry, reducing errors and saving time.

Accurate and timely data collection for better decision-making.

### Enhanced Communication

Seamless communication channels between operators, supervisors, and other departments.

Clear and consistent information flow, reducing misunderstandings and delays

### Increased Efficiency and Productivity

Designed to be user-friendly, it requires minimal training for your operators to get started

Streamlined workflows and processes, enhancing overall operational efficiency.

Higher output and faster delivery times, contributing to business growth

### Easy maintenance and evolution

As a cloud-based service, it's automatically updated and doesn't depend on or interfere with the upgrade cadence of the core Sage X3 solution.

## System Compatibility and Prerequisites

Sage Shop Floor Control can be used on a desktop browser on a laptop using Chrome Browser or on a tablet device.

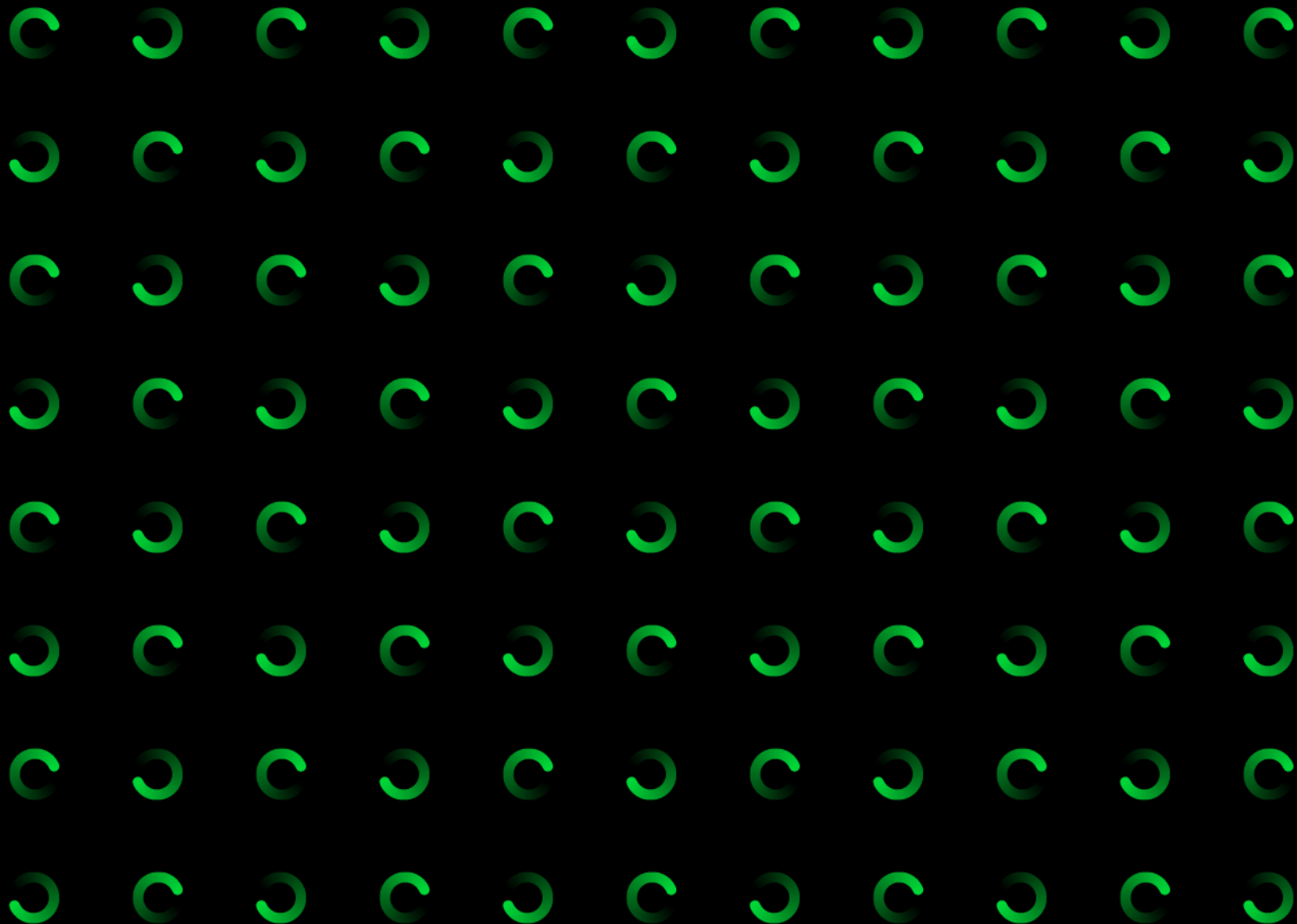
Tablet devices requirements (not provided by Sage):

- Screen size: 10" minimum.
- Apple or Android operating system: Android > 10 or iOS latest version.

Security is at the core of our cloud solutions: non-negotiable, uncompromising, and built to protect our customers at every level. To enable a secure connection with Sage X3, there are some system and security configurations that need to be in place.

For use with Sage X3, please make sure you're using 2024 R2 release or higher.

Please reach out to your Sage Business Partner or your usual Sage Support Channel for any queries or details.



[sage.com](https://www.sage.com)



©2024 The Sage Group plc or its licensors. Sage, Sage logos, Sage product and service names mentioned herein are the trademarks of The Sage Group plc or its licensors. All other trademarks are the property of their respective