

# DataSelf

## INFORMED DECISIONS

## Fast-Tracking Business Intelligence

**BEFORE**

Limited KPI Visibility

Conflicting Data

Laborious Reports

Slow-Running Reports

Data Silos


Limited Drill-Down


Hunting for Answers

What to Measure?




**DataSelf Analytics**  
BI-BASED REPORTING®

**DATA WAREHOUSING**

  
DFT  
Dimension, Fact, Time



**ANALYTICS**

**KPI LIBRARY**

8,000+

Customizable  
Reports & Dashboards

**AFTER**

360-Degree Business View

Single Version of the Truth

Automated & Streamlined

Insights in Seconds

Data Consolidation

Infinite Drill-Down

AI-Driven Insights

Largest KPI Library

Customizable Reports & Dashboards for ERP/CRM and other data silos

430+ no-code/low-code supported data sources

DataSelf.com

# Too much data, too little insight?

DataSelf uses a unique combination of data optimization, BI tools, and a **library of analytics for superior business insight.**

A 'single version of the truth' enables management and executives to trust the data and make the **most informed business decisions.**

## BENEFITS

### POWER via Auto-Configuration & Data Optimization

The core component is **DataSelf ETL+**, the most advanced data optimization and data warehousing technology on the market. It simplifies and expedites the report design and production process for your ERP/CRM and all your business apps – individually and blended.

### EASE-OF-USE via Top Analytical Tools

DataSelf works with the top BI Technologies: **Microsoft Power BI, Tableau, and Microsoft Excel** to enable infinite drill-down and slice-and-dice.

Additionally, Artificial Intelligence (AI) / Machine Learning (ML) lets users find answers to their data questions in plain English.

### SPEED via Library of Analytics

DataSelf includes the **largest library of analytical reports, dashboards, and KPIs** in the market.

From year-over-year sales variances and predicting potential inventory shortages, to forecasting future cash-flow; **reports run in less than 10 seconds** making it easier and faster to get to the bottom line.

## CUSTOMER QUOTES

*"DataSelf was exactly what we needed. I was impressed by its flexibility to look at our data from multiple angles, easily select what we needed, and by how user friendly it is. But more important is how fast we can now run reports with DataSelf."*



**Greg Washko**  
CEO

*"I'm impressed with the results including a 23% growth in EBITDA year over year. Our DataSelf reports give us more visibility than we've ever had, which has led to better and more timely decisions to grow our business."*



**Peter Paindiris**  
President

*"Our whole team appreciates how quickly and easily we can get the data we need. Before DataSelf, I was writing new GLs left and right, each taking anywhere from 1-2 hours. The equivalent DataSelf report takes only 5-10 minutes!"*



**Chris Goebel**  
ERP Analyst

*"All of our end users have received DataSelf with applause and 'wow moments'. I use DataSelf daily and have not encountered any limitations on scale."*



**Tom Vance**  
VP of Operations



# The industry's largest library with 8,000+ reports & dashboards\*

## Sales & Marketing

- Salesperson Performance
- Customers With Underperforming Sales
- Products With Underperforming Sales
- Top Customers By Sales Decline
- Customers That Stopped Buying
- Customer Lifetime Value Forecasting
- Year-Over-Year Comparisons
- Regional / Geographic Breakdown
- Seasonal Variances
- Sales & Gross Profit Pareto Analysis
- Product Profitability By Price Point
- Sales Projection & Ranking
- Commission Reporting
- Sales Velocity
- Campaign Response Analytics
- Cost Per Lead / Cost Per Sale
- Stuck Opportunities

## Financials & Cash Flow

- Cash Flow Projection
- P&L Analytics
- Balance Sheet Analytics
- Actual Versus Budget
- Year-Over-Year Comparisons
- Collection Effectiveness Index
- Bad Debt Analysis
- Days Sales Outstanding

## Inventory Management

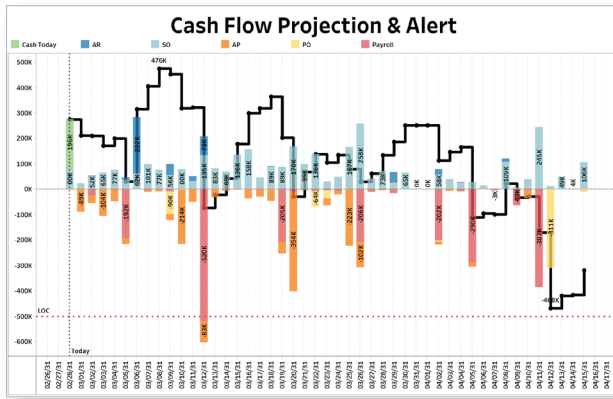
- Stock Utilization Projections
- Potential Stock Shortfall & Outage Warnings
- Forecast Surplus Items
- Slow Moving Items
- Inventory Transfer Optimization
- Days Of Stock
- Lost Sales From Stock Shortfalls
- Inventory Turnover
- Stock Usage By Year, Month, Week, & Day
- Bill Of Materials (BOM)
- Production Orders
- Replenishment Planning
- Purchase Price Variance
- Item Purchase Recommendations  
(Best Time / Best Supplier)

## Services

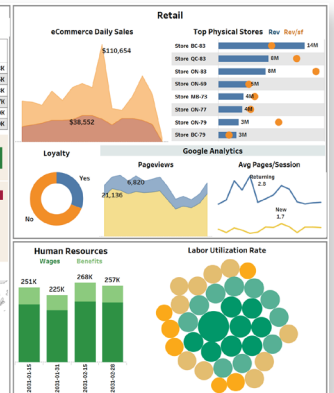
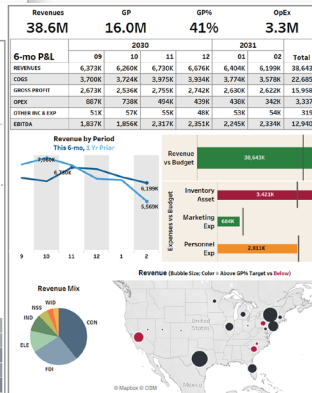
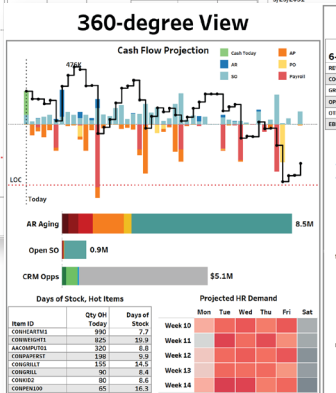
- Job Costing Metrics
- Project Cost / Revenue Analysis
- Metrics On Material Usage
- Hours; Estimated vs Actual, Overtime Analysis
- Client Support Costs; Per Case, Per User, Per Product
- Clients In Need Of Additional Services
- Re-prioritization Of Critical Support Cases
- Resource Availability
- Performance Breakdown By Worker, Department, & Projects

*\*Most templates may be used as is, others require customizations.*

# Samples from the 8,000+ KPI Library

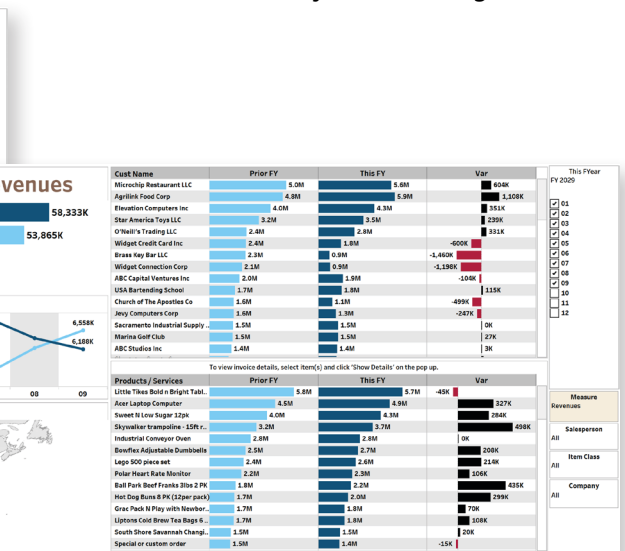
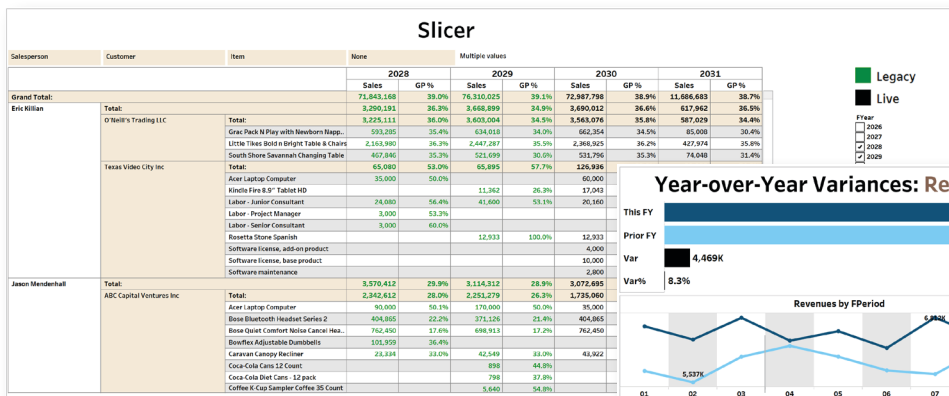


Due Date	Org Name	Tran Type	Doc No	Bal	Accrued	Due Date
2/28/2023	Null	Cash Today		196,492	196,492	2/28/2023 to 4/15/2...
Org 175	AP	AP 000668		208	196,284	
Org 970	SO	SO-021435	30	196,114		Branch
		SO-021450	330	196,444		All
		SO-021476	39,242	213,686		
		SO-021500	305	215,991		Dec No
		SO-021528	213	216,204		All
		SO-021529	86	216,291		Org Name
		SO-021532	27	216,318		All
		SO-021533	34	216,352		
		SO-021534	24	216,375		Cash Flow Adj
		SO-021553	62	216,438		3/25/2023



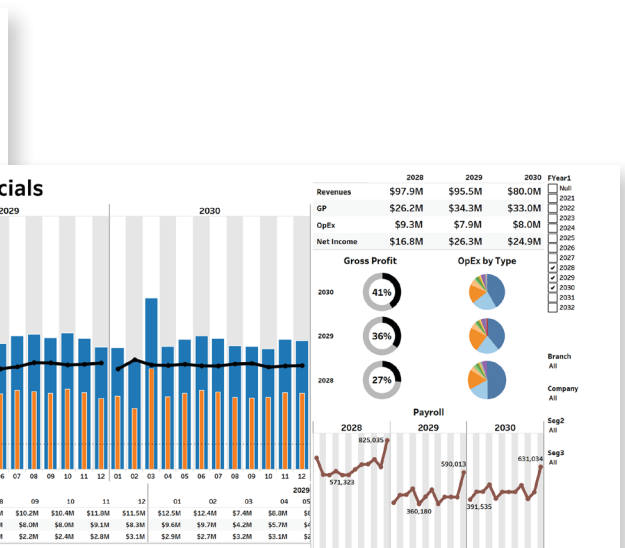
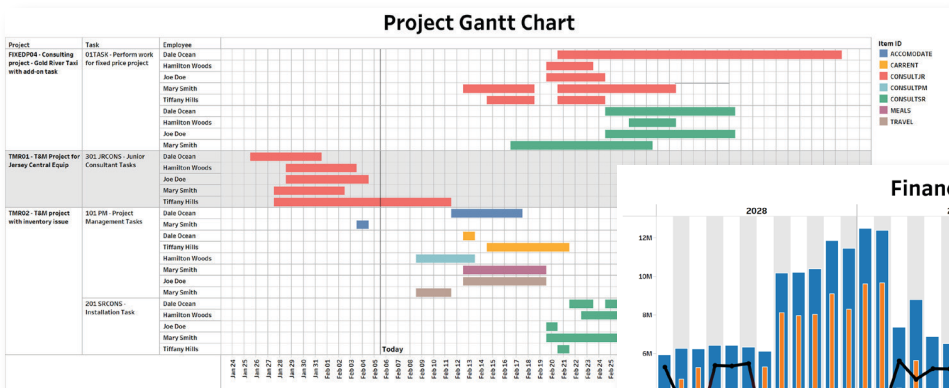
Improve projections on cash flow, sales, and inventory.

Give executives all they need – at a glance.



Leverage infinite slice-and-dice & drill-down.

Detect variance anomalies across your data.



Manage projects – with great efficiency.

Have a clearer picture of your financial standing.